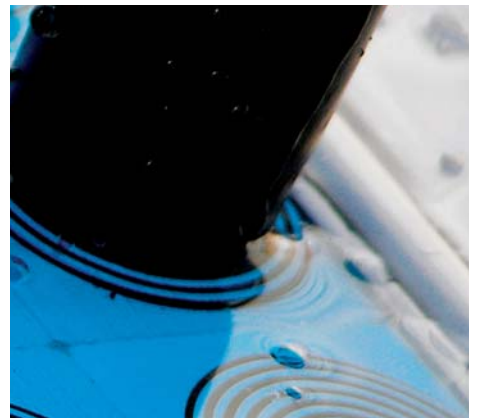
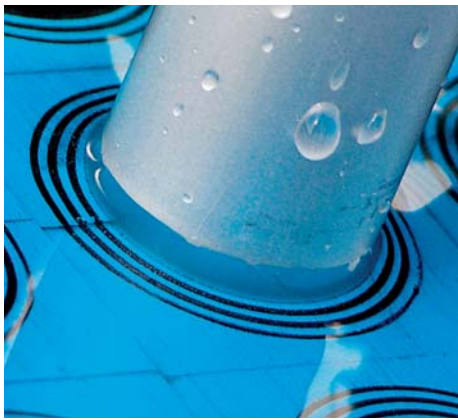
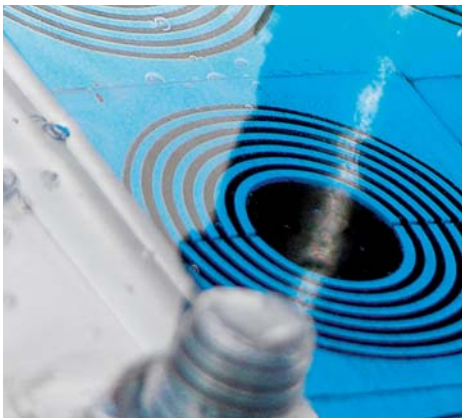
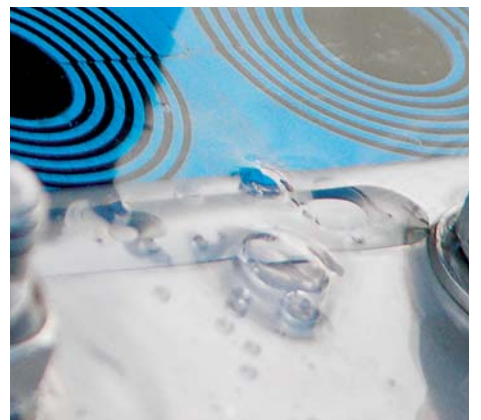


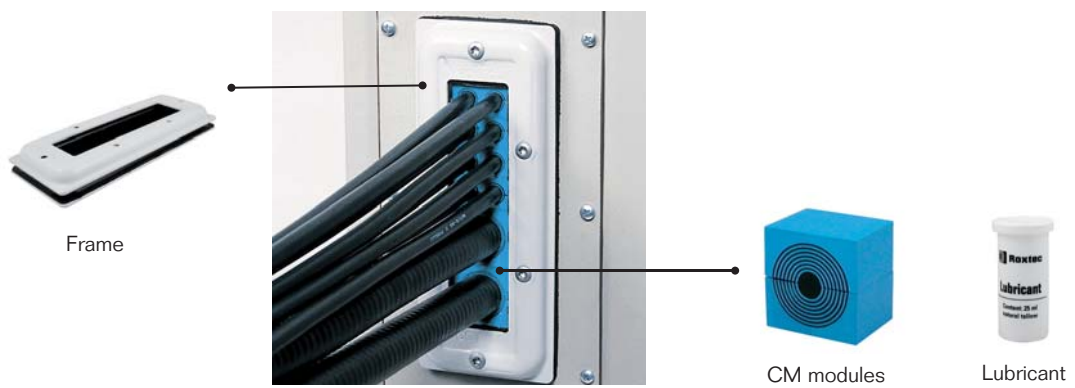
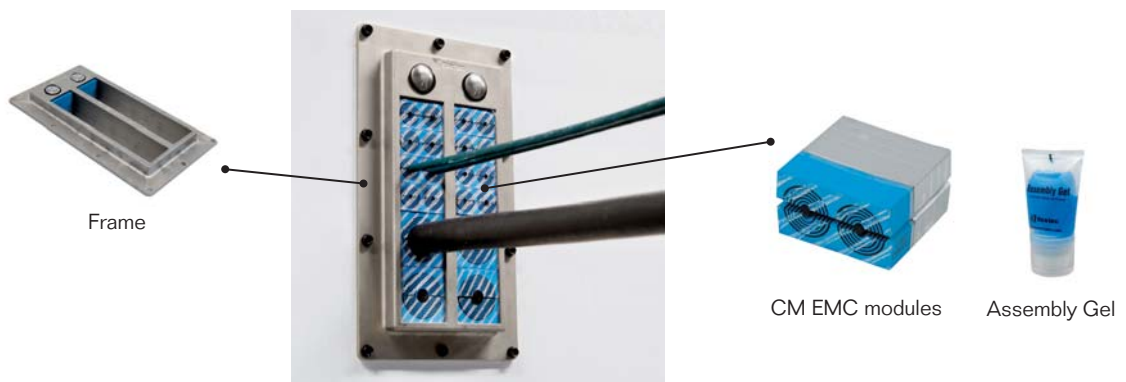
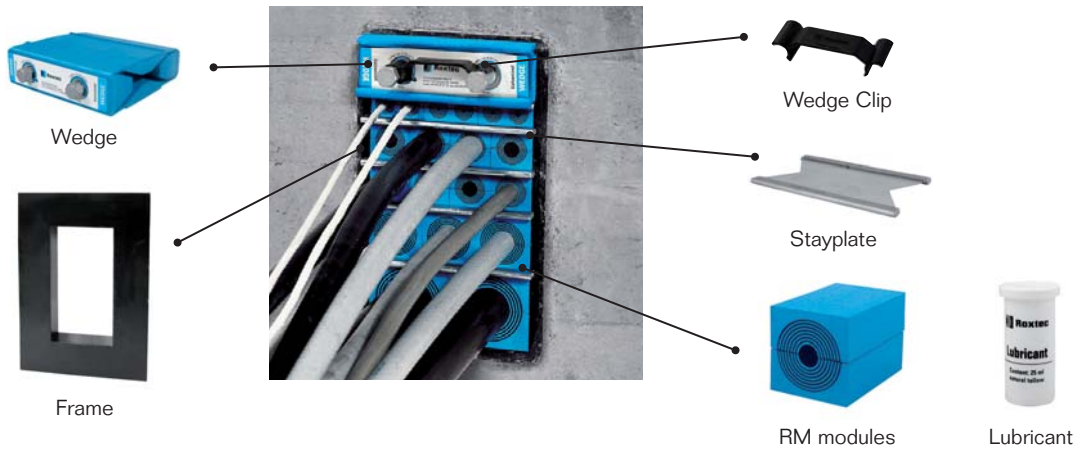
PRODUCT OVERVIEW



2011-2012



Rectangular solutions



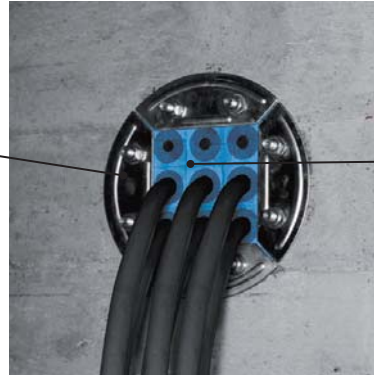
Round solutions



Sleeve (optional)



Frame



RM modules



Lubricant

Round solutions for single cable or pipe



Sleeve (optional)



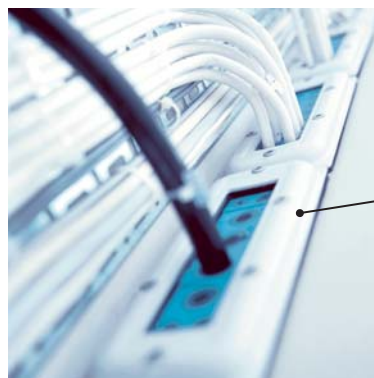
RS seal



Lubricant

Kit solutions

Thanks to Multidiameter™, our flexible solution based on sealing modules with removable layers, we can always supply you with a kit containing all necessary components to create a complete seal. Any frame or seal in our product range can be delivered as a tailored kit. To simplify your work, a selection of our products is only available in kits – complete sealing solutions!



Kit including all components

Roxtec sealing system

Modules



RM module



RM module kit



Waveguide core



CM module

Rectangular frames



S frame



SRC frame



SK frame



SBTB frame



SF frame



GHM frame



B frame



G frame



Swan Neck frame



KFO frame



ComPlus frame



ComShelt™



ComSeal™



CF 8 frame



CF 32 frame



CF 16 frame



CF 24 frame



EzEntry™

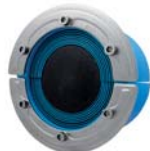


C KFO frame

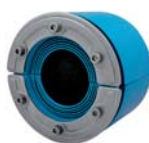
Round frames/seals



R frame



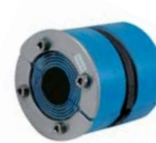
RS seal



RS OMD seal



RS PPS
back-to-back seal



RS PPS/S
single-side seal



R X seal



RS X seal



C RS T seal



RG M63 seal



CRL seal

Assembly parts



Wedge kit



Wedge



Stayplate



C Wedge kit



C Wedge



C Stayplate



Lubricant



Assembly Gel

Accessories



GE extension frame



SE PPS extension frame



Entry plate



Sleeves with/without flange



Casting mould



Casting mould



DD Cover



Sealing strips



Pre-compression wedge



Pre-compression tool



Pre-compression eccentric tool



Pre-compression handgrip tool



Top packing puller



Top packing puller adapter



Stayplate clamps



Stayplate clips



RG M63 tools



Module Adaption Indicator



Pressure Test Pipe



RTM Software



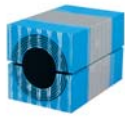
CAD Library



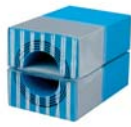
EMC marking tool

Roxtec EMC sealing system

EMC modules



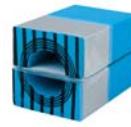
RM ES module



RM ES B module



RM PE module



RM PE B module



CM ES module



CM PE module

EMC rectangular frames



S frame



SF frame



B frame



G frame



ComSeal™ EMC



CF 8 frame EMC



CF 32 frame EMC



C Compression unit ES

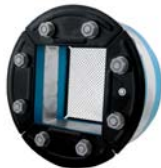


C Compression unit IP/PE

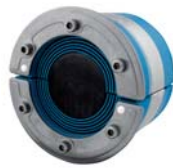


CF 16 frame EMC

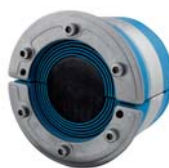
EMC round frames/seals



R frame EMC



RS ES seal



RS PE seal

Assembly parts



Wedge kit



Wedge



Stayplate



Wedge cover ES



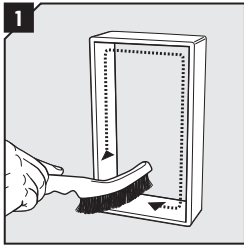
Lubricant/
Assembly Gel

Roxtec Ex sealing system

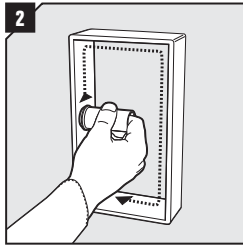


For product range, please contact your local Roxtec supplier, email: info@roxtec.com, or visit www.roxtec.com.

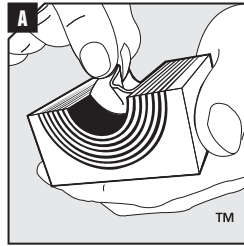
How it works



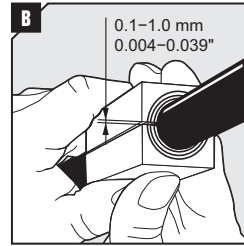
1 Make sure that the inside surfaces of the frame are free from dirt or dust.



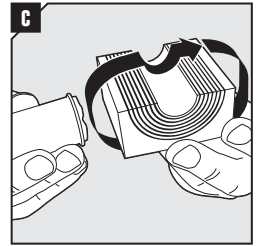
2 Lubricate the inside surfaces of the frame with Roxtec Lubricant, especially into the corners.



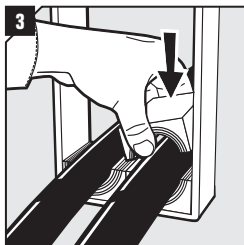
A Adapt modules, which are to hold cables or pipes, by peeling off layers until you reach the gap seen in pic. B. The halves may not differ by more than one layer.



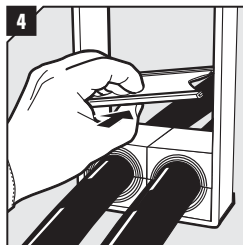
B Achieve a 0.1–1.0 mm gap between the two halves when held against the cable/pipe.



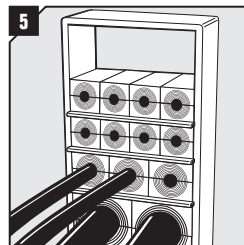
C Lubricate all modules for the frame thoroughly, both the inside and the outside surfaces.



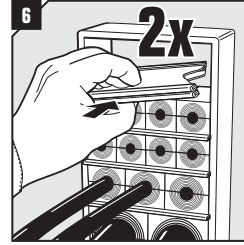
3 Insert the modules according to your installation plan (transit plan). It is recommended to seal cables/pipes at the bottom of the frame and put spare modules on top.



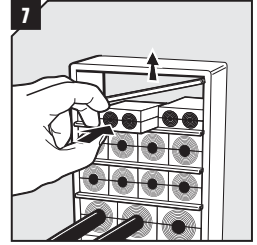
4 Insert a stayplate on top of every finished row of modules.



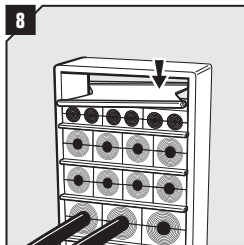
5 Continue to fill up the packing space of the frame, until one final row is left. See pictures "Packing space" for the full size of the space.



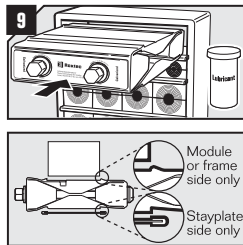
6 Before inserting the final row of modules, insert two stayplates.



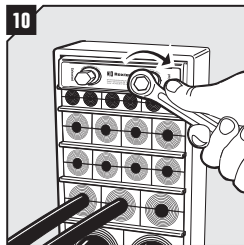
7 Separate the two stayplates and insert the final row of modules between the stayplates.



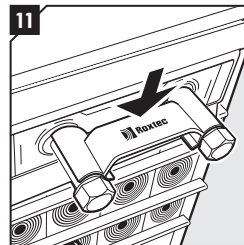
8 Drop the upper stayplate on top of the modules.



9 Lubricate all sides of the wedge sparsely, except front and back. Please read the markings on the wedge and turn it correctly before inserting it in the top of the frame (standard position). Face with "Stayplate this side" must always face a stayplate.



10 Tighten the screws until full stop, approx 20 Nm (15 ft.lb.).



11 Attach the Wedge Clip to the wedge bolts to check that the wedge is properly tightened.

DISCLAIMER

"The Roxtec cable entry sealing system ("the Roxtec system") is a modular-based system of sealing products consisting of different components. Each and every one of the components is necessary for the best performance of the Roxtec system. The Roxtec system has been certified to resist a number of different hazards. Any such certification, and the ability of the Roxtec system to resist such hazards, is dependent on all components that are installed as a part of the Roxtec system. Thus, the certification is not valid and does not apply unless all components installed as part of the Roxtec system are manufactured by or under license from Roxtec ("authorized manufacturer")."

Roxtec gives no performance guarantee with respect to the Roxtec system, unless (i) all components installed as part of the Roxtec system are manufactured by an authorized manufacturer and (ii) the purchaser is in compliance with (a), and (b), below.

(a) During storage, the Roxtec system or part thereof, shall be kept indoors in its original packaging at room temperature.

(b) Installation shall be carried out in accordance with Roxtec installation instructions in effect from time to time.

The product information provided by Roxtec does not release the purchaser of the Roxtec system, or part thereof, from the obligation to independently determine the suitability of the products for the intended process, installation and/or use.

Roxtec gives no guarantee for the Roxtec system or any part thereof and assumes no liability for any loss or damage whatsoever, whether direct, indirect, consequential, loss of profit or otherwise, occurred or caused by the Roxtec systems or installations containing components not manufactured by an authorized manufacturer.

Roxtec expressly excludes any implied warranties of merchantability and fitness for a particular purpose and all other express or implied representations and warranties provided by statute or common law. User determines suitability of the Roxtec system for intended use and assumes all risk and liability in connection therewith. In no event shall Roxtec be liable for consequential, punitive, special, exemplary or incidental damages."

Multidiameter™ by Roxtec

Six module sizes

Our adaptable solution Multidiameter™, based on sealing modules with removable layers, makes installation easy and safe. The modules consist of two halves and a center core. You can seal

cables or pipes of several different sizes simply by peeling off layers from the module halves, until a perfect fit is achieved. If not removed, the center core turns the module into a spare capacity unit.



Standard and customized solutions

This index contains our standard range of products. If you need help finding a special solution that fits into your design or structure, please do not hesitate to contact your local Roxtec supplier or e-mail info@roxtec.com for

guidance. The list of local Roxtec representatives is available at www.roxtec.com.

For more product information, see the Roxtec Product Catalogue.



All rights reserved

We reserve the right to make changes to the product and technical information without further notice. Any errors in print or entry are no claims for indemnity. The content of this publication is the property of Roxtec International AB and is protected by copyright.



Roxtec International AB
Box 540, SE-371 23 Karlskrona, SWEDEN
PHONE +46 455 36 67 00, FAX +46 455 820 12
EMAIL info@roxtec.com, www.roxtec.com